



SUMMARY OF FEDERAL CONTRACTS

PRIME FEDERAL CONTRACTS	CONTRACT CAPACITY
Multidiscipline Miscellaneous Civil and Other A/E Services within the Jacksonville District, Puerto Rico and U.S. Virgin Islands, U.S. Army Corps of Engineers, Jacksonville District	\$130.0M (Shared Capacity)
A/E Services for Civil Works Planning and Design Services within the Kansas City District, U.S. Army Corps of Engineers, Kansas City District	\$36.0M (Shared Capacity)
A/E Services for Specialized Antennas, Towers and Related Communication Facilities Worldwide, Naval Facilities Engineering Command, Engineering and Expeditionary Warfare Center (NAVFAC EXWC)	\$5.5M
A/E Services within the Chicago District and Lakes and Rivers Division, U.S. Army Corps of Engineers, Chicago District	\$5.0M
A/E for Design and Evaluation Services for Railroads and Roadways Worldwide, U.S. Army Corps of Engineers, Omaha District	\$4.5M



Weide Army Airfield Heliport Master Plan, Aberdeen Proving Ground, MD

35 YEARS'
experience in completing
federal projects

31 OFFICES
IN 10 STATES

FEDERAL CLIENTS

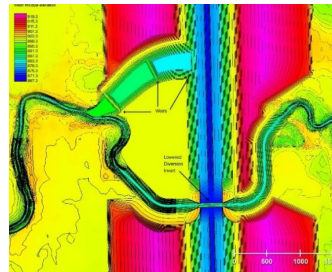
- U.S. Army Corps of Engineers
- Naval Facilities Engineering Command
- U.S. Air Force Civil Engineering Center
- U.S. Department of Agriculture
- National Guard Bureau
- U.S. Department of the Interior
- U.S. Department of Homeland Security
- U.S. Department of State
- Federal Aviation Administration
- U.S. Agency for Global Media



Scott Air Force Base Taxiway Bridge, St. Clair County, IL



Stratton-Bolger Lock and Dam on Fox River, McHenry County, IL



Hydraulic modeling for Maple River, Fargo, ND, and Moorhead, MN

Fort Polk Railroad Rehabilitation, Vernon Parish, LA



SUPPORTING FEDERAL CONTRACTS	CONTRACT CAPACITY
A/E Services for Civil Works Planning and Design Services within the Kansas City District, U.S. Army Corps of Engineers, Kansas City District	\$90.0M (Shared Capacity)
A/E Services for Value Engineering within the Boundaries of the Louisville District, U.S. Army Corps of Engineers, Louisville District	\$20.0M (Shared Capacity)
A/E Services for Construction Management Services within the Louisville District Boundary, U.S. Army Corps of Engineers, Louisville District	\$18.0M
A/E Services for Water Resources, United States Department of Agriculture, National Resources Conservation Services	\$9.0M
A/E Services for Value Engineer within the Boundaries of the Louisville District, U.S. Army Corps of Engineers, Vicksburg District	\$3.0M
A/E Services for Communications Facilities Worldwide, U.S. Agency for Global Media (Voice of America)	\$5.0M
A/E Services for Value Engineering within the Boundaries of the Omaha District, U.S. Army Corps of Engineers, Omaha District	\$2.5M

EXPERIENCE INCLUDES:

- Civil works planning and design
- Dam and levee safety
- Water resources services
- Military facilities planning
- DOD and federal communications facilities planning and design
- Military facilities rehabilitation and SRM
- Military facilities design
- Military transportation (rail, aviation, roadway) systems planning
- Military transportation (rail, aviation, roadway) systems design
- Federal standards development
- Geotechnical and geo-structural evaluation and design
- Anti-terrorism force protection
- Sustainable design
- Commissioning of federal facilities
- PAVER™/BUILDER™ implementation

Civil Engineering Facilities, 183d Wing, Illinois Air National Guard, Springfield, IL



CONTACT:



Steve Alm, P.E., LEED AP
 Federal Services Principal
 salm@hanson-inc.com
 (612) 682-4474

